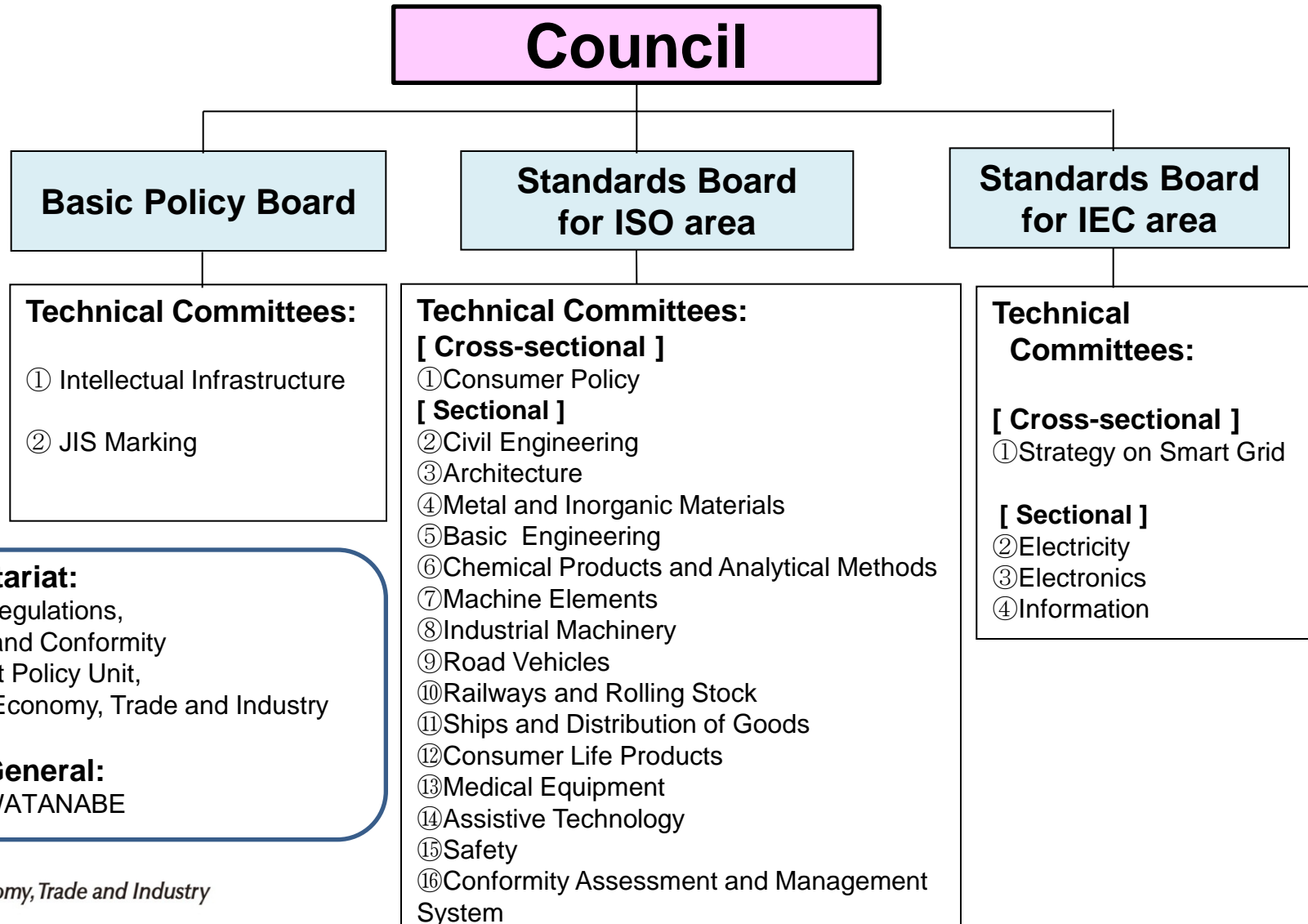


Organizational Structure of JISC

President: Dr. Hiroshi TOMONO, Representative Director and Vice Chairman, Nippon Steel & Sumitomo Metal Corp.



JISC Secretariat:

Technical Regulations,
Standards and Conformity
Assessment Policy Unit,
Ministry of Economy, Trade and Industry
(METI)

Secretary General:

Mr. Shoji WATANABE

